

BLS 425 ABEK2P3 R

FILTERS WITH UNIVERSAL RD40 CONNECTION



BLS 400 series filters are available with different protection combinations. They are compatible with all respiratory protection devices thanks to the universal RD40 threaded connection according to norm EN 148-1.



DUST FILTER

Filtration efficiency is 99,99%. The integrity of the filtering material is ensured by a protective mesh.

UNIVERSAL CONNECTION

Standard thread connection according to EN 148-1, universal among all respiratory protection devices.

ACTIVATED CARBONS

The quality of the activated carbons used by BLS for the filtration of gases and vapours, meets high standards of safety ensuring excellent filtration performances. They are produced without toxic additives such as Hexavalent Chromium (Cr VI).

FILTER CANISTER

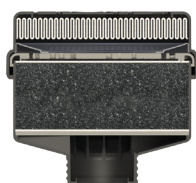
Made of non deformable ABS allows to have a absolute control over the compression of the activated carbon grains within, this way air corridors are completely avoided making the filter 100% safe.



BLS 425 ABEK2P3 R

FILTERS WITH UNIVERSAL RD40 CONNECTION

FILTER TYPE



Combined

COMPATIBLE DEVICES



Full face masks
BLS 5400 - BLS 5150



Full face masks
BLS 3150 - BLS 3150V



Full face masks
BLS 2150 - BLS 2150V

MATERIALS

FILTER'S CANISTER
DUST FILTERING MATERIAL
GASES AND VAPOURS
FILTERING MATERIAL

Acrylonitrile butadiene styrene (ABS)
Pleated fiber mesh
Activated carbons grains

STORAGE

SHELF-LIFE
TEMPERATURE
RELATIVE HUMIDITY

5 years
-10° / +50° C
80% max

TECHNICAL DATA

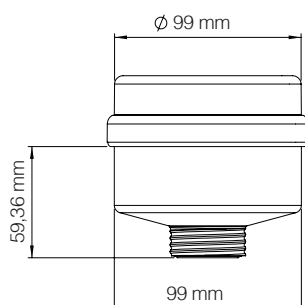
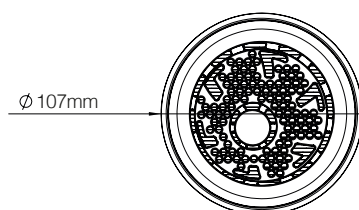
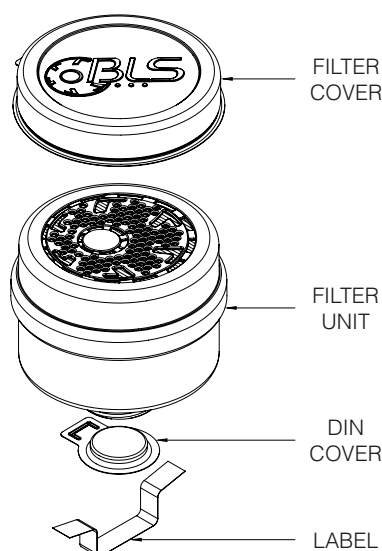
MODEL	PROTECTION	TYPE	NPF (half masks)	NPF (full face masks)	CONNECTION
BLS 425*	ABEK2P3 R	Combined filter	48*TLV	1000*TLV	EN 148-1 (Universal)

(TLV) Threshold Limit Value (NPF) Nominal Protection Factor

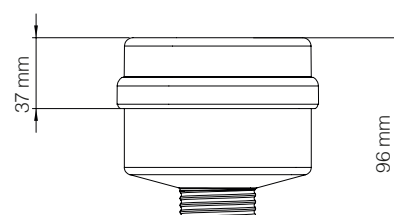
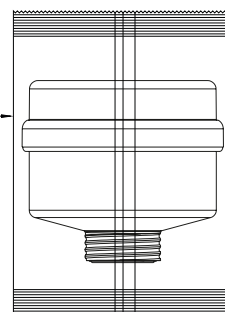
(*) These filters cannot be used with half masks because their weight is greater than 300g

A = Organic gases and vapours B = Inorganic gases and vapours E = Acid gases and vapours K = Ammonia and derivatives P = Dusts

COMPONENTS AND DIMENSIONS



INDIVIDUALLY
PACKED



BLS 425 ABEK2P3 R

FILTERS WITH UNIVERSAL RD40 CONNECTION



GAS CAPACITY AND TEST CONDITIONS OF GAS FILTERS OF TYPES A, B, E AND K

TYPE AND CLASS	TEST GAS	MINIMUM BREAKTHROUGH TIME AT TEST CONDITION min	TEST GAS CONCENTRATION IN AIR		BREAKTHROUGH CONCENTRATION ml/m ³
			vol %	mg/l	
A 2	Cyclohexane (C ₆ H ₁₂)	35	0,5	17,5	10
B 2	Chlorine (Cl ₂)	20	0,5	15,0	0,5
	Hydrogen sulphide (H ₂ S)	40	0,5	7,1	10
	Hydrogen cyanide (HCN)	25	0,5	5,6	10 ^(a)
E 2	Sulphur dioxide (SO ₂)	20	0,5	13,3	5
K 2	Ammonia (NH ₃)	40	0,5	3,5	25

TRANSPORT

CODE	MODEL	PROTECTION	WEIGHT (g) ± 3	Q.TY/BOX	Q.TY/CARTON	CARTON WEIGHT (Kg) ± 0,1
8011012	BLS 425	ABEK2P3 R	338	4	16	6,0

CERTIFICATION

BLS filters are:

- Certified according to European Regulation 2016/425 (Personal Protective Equipments)
- Certified as PPE of III category, in presumption of conformity to harmonized standard EN 143:2000 + A1:2006 and EN 14387:2004 + A1:2008
- Certified and controlled according to Annex D by Italcert S.r.l. (Notified Body n°0426)
- CE marked

BLS management system is ISO 9001 certified.

IMPORTANT

BLS declines any responsibility, direct or indirect, from any misuse of both devices and instructions. User is responsible for the determination of product compliance with the intended use.

SELECTION GUIDE

CLASS

- Determines the duration of the filter:
- Class 1 = 1000 ppm, Class 2 = 5000 ppm

COLOUR CODES

- A - Organic gases and vapours (Boiling point > 65°C)
- B - Inorganic gases and vapours
- E - Acid gases
- K - Ammonia and derivatives
- P - Dust